

# Models 2800 and 2810 Moisture Detectors

- ▶ Neon Warning Lamps
- ▶ Choice of Voltages
- ▶ Pushbutton Test Circuit
- ▶ Easy Screw-in Connections
- ▶ NEMA Enclosures

These Warrick devices are designed to detect seal leaks in submersible, oil-filled pump motors. Using conductivity technology, the Model 2800 moisture detection system signals the presence of water in an oil-filled cavity. When combined with a Warrick 3H fitting installed by pump manufacturer, it will indicate the presence of water in the oil when the pump is operating.

The Model 2810 is similar to the 2800, except it also provides an indicator lamp for outer seal leakage.

## Specifications

<b>Supply Voltage</b>	115 VAC, 230 VAC, 460 VAC, 575 VAC
<b>Secondary Voltage</b>	500 VAC
<b>Connections</b>	All screw type connections
<b>Contact Rating</b>	16 amp Resistive 1 hp

## How to Order

Use the **Bold** characters from the chart below to construct a product code.

Model	<b>2800</b>	<b>2810</b>	<b>2800</b>	<b>X</b>	<b>X</b>	<b>X</b>	<b>X</b>
Supply Voltage	<b>1</b> – 115 VAC	<b>4</b> – 460 VAC	<b>2</b> – 230 VAC				
Contact Configuration	<b>C</b> – 2 (N.O.), 0 (N.C.) <sup>1</sup>	<b>D</b> – 1 (N.O.), 1 (N.C.)	<b>E</b> – 0 (N.O.), 2 (N.C.)				
	<b>F</b> – 3 (N.O.), 0 (N.C.) <sup>1</sup>	<b>G</b> – 2 (N.O.), 1 (N.C.)	<b>H</b> – 1 (N.O.), 2 (N.C.)				
	<b>J</b> – 0 (N.O.), 3 (N.C.)						
Enclosure	<b>0</b> – Open	<b>4</b> – NEMA 4	<b>1</b> – NEMA 1				
		<b>7</b> – NEMA 7					
Option	<b>A</b> – No gasket or drain plug <sup>2</sup>						

Notes:  
 1. 2800 only. On 2810, one (1) N.C. contact is dedicated to outer seal leakage indicator.  
 2. NEMA 7 only.

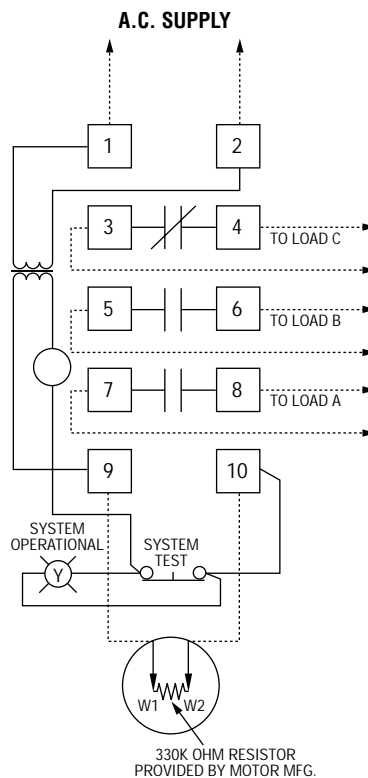


Model 2800

## Applications

- Submersible Pumps
- Seal Leak Warning
- Preventive Maintenance

## Wiring – 2800



## Wiring – 2810

